

~~COLONY & PROTECTORATE OF KENYA~~

DISTRICT OF NAIROBI AREA

Locality City of Nairobi

Meridional District South A 37  
                                   g   11   b

Land Reference No. 11522

(Orig. No. 7659/3)

Subdivision No. — (Orig. No. —)  
 of Section No. —

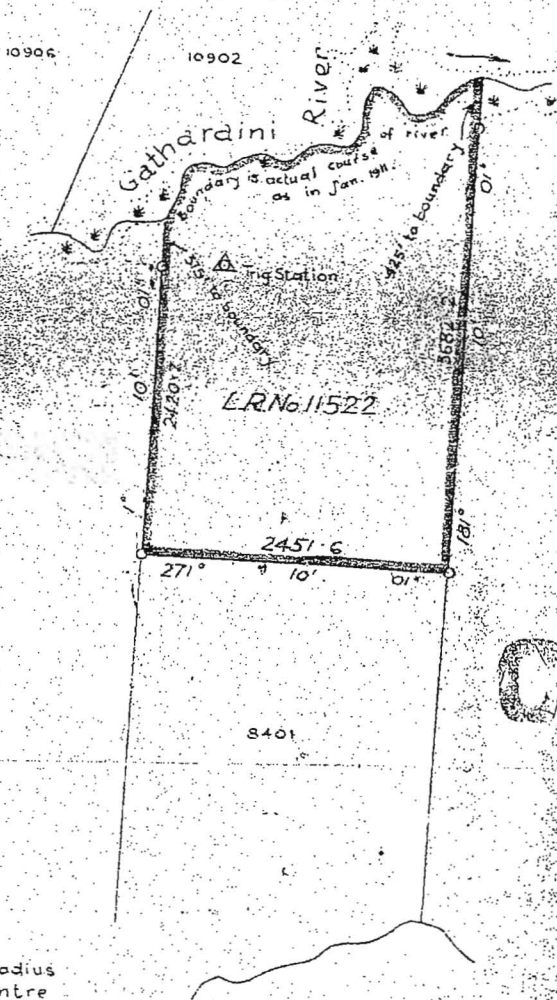
Scale: 1 in. 12500 or 1041.66 Feet to 1 Inch

Area = 200 Acres (Approx.)

Bearings	Distances
a	Feet

COPY

COPY



COPY

Note:  
 Land within a radius  
 of 20' from centre  
 of Trig Station is  
 reserved to Government.

*V. C. Cartwright*  
 for Director of Surveys  
 Nairobi 26<sup>th</sup> May 1964

Traced by *tk*  
 Compared by *ml*

Please quote this PLAN No. 82204